



## **Introduction**

2can limited is a Building Services Engineering Consultancy formed in November 2003 with the objective of producing the highest quality mechanical and electrical building services designs, supervision and professional advice at competitive market fees.

## **Background**

Directors Colin and Paul are chartered mechanical and electrical engineers, each with more than 20 years experience of building services engineering design. They were associate directors at Operon, formerly Ibsec, prior to forming 2can limited, and had developed and worked in their Hull office for over 6 years. Colin had previously worked at Humberside County Council and then worked in contracting for Bardale (Services) Ltd. Paul had previously worked at the Local Authorities of Kingston upon Hull City Council and Humberside County Council.

Both have extensive experience in all aspects of Building Services Engineering and in working for different partners in the supply chain e.g. Client/Architect/Project Manager/Contractor. The information contained herein indicates some of the work undertaken by Colin and Paul as 2can limited and with their former employers.

## **Service provided**

2can limited in depth knowledge and experience means that we are able provide a responsive and personalised service in producing the Design, Specification, Drawings, Supervision & management of contracts, as well as Estimates and Advice, related to all areas of Mechanical and Electrical building services, including the following disciplines:

- Gas and water distribution within and between buildings
- Space heating and cooling
- Air supply and extraction ventilation
- Hot and cold water services
- Piped medical and laboratory gases
- Interior and exterior lighting
- Electrical cabling and power distribution within and between buildings
- Supplies to electrical equipment, machines and general power provision
- Data and communications systems
- Lightning protection
- Fire alarm and security systems
- HVAC Wiring and control systems

## **Users of this service**

2can limited provide this service for; Architects, Project Managers, Builders/Developers, Local authorities and government, Universities, Schools and Colleges, NHS and Healthcare organisations, Mechanical and Electrical Contractors, Property Owners and Businesses of all types.

## Building services engineering experience

2can limited staff have many years experience of building services engineering and pride themselves in being able to offer a professional and personal approach in the delivery of service.

The curriculum vitae of key staff members are available on request.

## Best value

2can limited aim to provide the best value for the client and the building user, both in terms of service provided and finished installation.

Best value in terms of service provided is achieved by maintaining quality to meet the clients requirements and delivering this at minimum cost by efficient use of our resources, staff and technology.

Best value in terms of finished installation is achieved by ensuring that our design is up to best practice and fully considers and balances the varied needs of the client as well as satisfying modern standards and regulations.

## Insurance

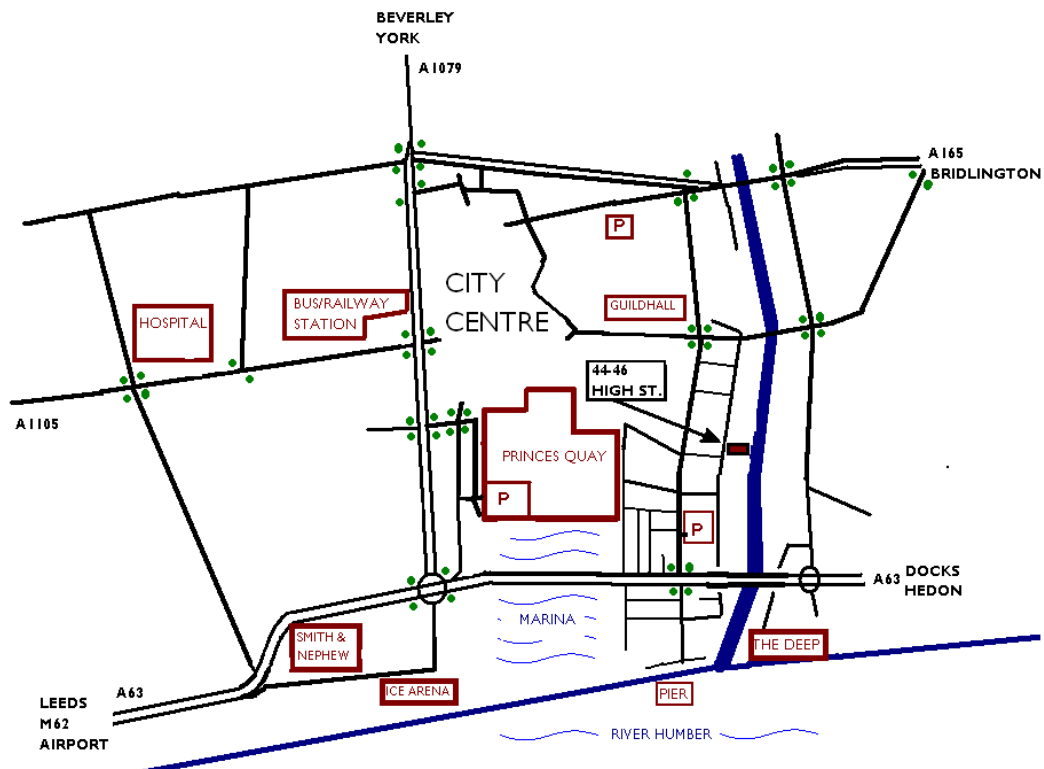
2can limited carry full Professional indemnity cover, Public liability cover and Employers liability cover. Full details can be provided upon request.

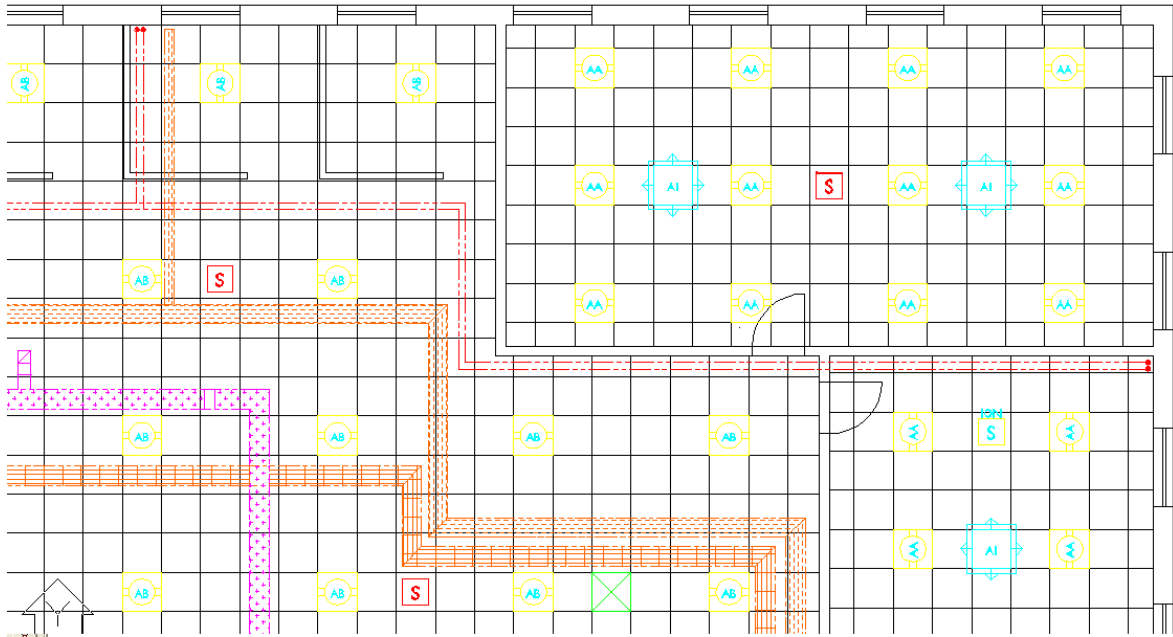
## Registrations

2can limited are registered in England as company No. 495146 and have their registered office at:

Danish Buildings, 44-46 High Street, Kingston upon Hull, HU1 1PS.

2can limited are VAT registered no. 828 6196 92





### **Cad & technology**

2can limited employ technology where it contributes to better quality and higher efficiency. All drawings and designs are produced using industry standard Autodesk/Autocad and Microsoft software, as well as standard design software so as to ensure maximum compatibility with our clients systems.

### **Health and safety**

2can limited are committed to the health and safety of all staff and persons affected by the operations of their staff. It is company policy that accepted safe working practices are followed and this is re-enforced by regularly updated written procedures which are to be adhered to whilst undertaking specific tasks.

### **Equal opportunities**

The personnel employed by 2can limited are employed on the sole basis of their abilities and suitability for the job with no bias allowed for sex, race or disability.

### **Conclusion**

I hope that the brief details provided here give an appreciation of the company and the services that can be provided but please do not hesitate contact us if you require further information or details.